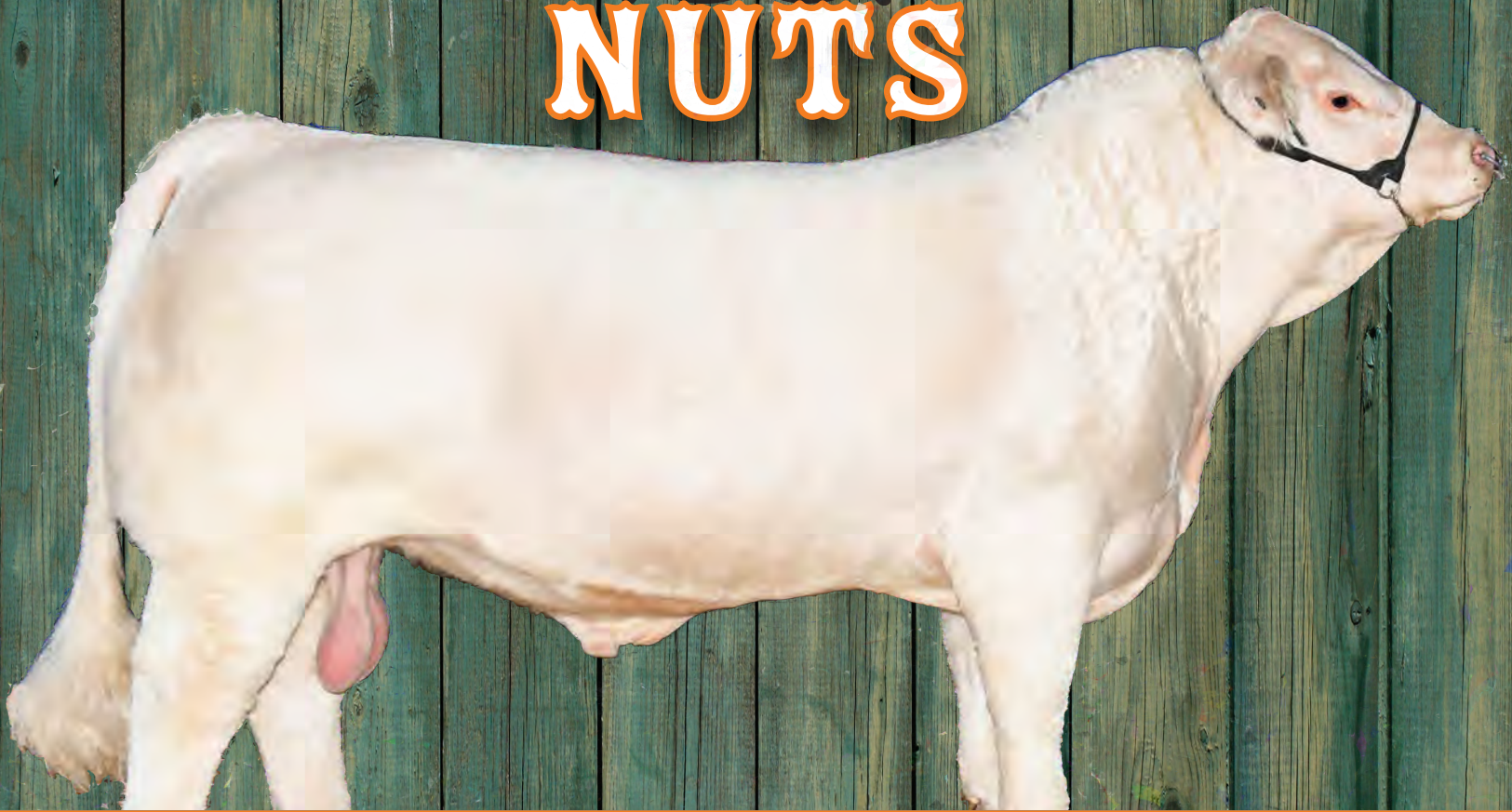


2020 GUTS BUTTS NUTS



COUNTRY
JUNCTION
FEEDS



**Springside Farms was awarded the cover photo for this
15th Annual issue of the "Guts, Butts & Nuts" Report**



Springside Farms are located in Central Alberta and specializes in the production of Charolais breeding stock. With over 36 years in the business, we know the importance of producing cattle that are structurally sound to excel in the feedlot or compete in the show ring.

You don't have to compromise looks for functionality, that's why we provide quality animals that any fellow breeder or commercial cattleman can add to their program.

When you invest in Springside genetics, you can trust that you are receiving an animal that has been treated with kindness and respect and was bred with honesty and integrity.

We are confident that our genetics are going to elevate your operation and be a welcome addition to your herd.

Raising quality cattle starts with sourcing high quality feed. Springside Farms has had the pleasure of working with Country Junction Feeds for almost 20 years to feed all our sale bulls and heifers.

Brian Malmas is never more than a phone call away and we appreciate his attention to detail when optimizing feed rations that suit our needs.

**Mike Panasiuk – Springside Farms phone: 1-250-832-8209
E-mail address: mike.springsidefarms@gmail.com**

Introduction

This "Guts, Butts & Nuts Report" is a summary of the 2020 spring bull sale season. In the following pages we will outline the performance statistics of over 2200 bulls from 84 anonymous ranches.

This report ranks ranch performance in 4 main categories: Adjusted Average 205 Day Weights; Adjusted Average 365 Day Weights; 205 – 365 Adjusted Average Daily Gain Weights and Scrotal Circumference.

The data displayed in the following pages comes from the respective ranch's sale day catalogues. Data used is only retrieved from bulls sold in the spring of 2020, for bulls born in 2019. This information is as accurate as the sales catalogues it was retrieved from. Any bulls in the sales which did not meet the birth date criteria were omitted from this summary. In this report, all the names of the producers have been left out.

The data shown in this report is in no way statistically significant but does represent the random data gathered from a number of 2020 spring bull sales.

This report also provides information of the anonymous ranches that follow our Country Junction Feeds "Right Way" feeding program. This section merely acts as a reference to gauge the performance statistics against.

There is also a section devoted to explaining some of the feeds listed in this report. This information is provided to help better understand why the rations listed have shown such strong results. The "Guts, Butts & Nuts Report" also explains more about Country Junction Feeds practical feeding guidelines and ruminant nutrition.

Farm #	Breed	B.W.	Avg. Adj. 205	WGPD B.W.-Adj. 205	Avg. Adj. 365	WGPD B.W.-Adj. 365	Avg. Sale Date Weight	Scrotal Size	# of Bulls	Adj. 205 - 365 Wt. Gain	A.D.G.
1	Charolais	93	792.7	3.41			1432.1	40.5	50		
2	Charolais	95.4	801.2	3.44	1450.2	3.71	1451.1	40.8	61	649.0	4.06
3	Charolais	96.3	841.4	3.63			1383.3	37.2	43		
4	Charolais	90.2					1426.0	39.9	32		
5	Charolais	93.3					1385.2	40.4	26		
6	Charolais	94.8					1445.3	38.2	16		
7	Charolais	95.5					1463.2	37.3	30		
8	Charolais	97.1	735.3	3.11	1203.7	3.03		37.8	21	468.4	2.93
9	Charolais	96.6					1361.9	35.7	15		
10	Hereford	87.6	851.9	3.73	1341.0	3.43	1389.5	39.5	12	489.1	3.06
11	Angus	85.6	668.4	2.84			1278.7	36.4	16		
12	Angus	83.3	702.4	3.02			1342.5	37.5	35		
13	Angus	80.0	760.5	3.32	1236.2	3.17	1243.7	36.0	33	475.7	2.97
14	Angus	78.8	769.5	3.37	1248.2	3.20	1374.4	37.1	122	478.7	2.99
15	Angus	83.5					1352.6	38.0	30		
16	Angus	84.0	725.6	3.13	1313.6	3.37	1389.4	38.4	42	588.0	3.68
17	Angus	78.6	675.6	2.91	1076.3	2.73	1254.0	37.2	28	400.7	2.50
18	Angus	79.1					1327.1	36.7	10		
19	Angus	84.1	704.8	3.03			1197.5	36.2	12		
20	Angus	85.1	765.0	3.32	1255.9	3.21	1317.3	37.8	18	490.9	3.07
21	Angus	81.8	811.8	3.56	1310.0	3.36	1419.1	36.7	6	498.2	3.11
22	Angus	80.9	646.7	2.76			1250.0	37.7	24		
23	Angus	84.7	683.4	2.92	1086.0	2.74	1180.3	34.6	38	402.6	2.52
24	Angus	85.1	667.9	2.84			1126.9	34.4	11		
25	Angus	80.0					1316.0	38.0	40		
26	Angus	80.1	717.1	3.11	1224.5	3.14	1385.7	38.2	42	507.4	3.17
27	Angus	79.0	628.9	2.68			1256.8	35.6	34		
28	Angus	86.1	698.8	2.99	1184.5	3.01	1325.5	39.6	31	485.7	3.04
29	Angus	83.8	717.8	3.09	1084.4	2.74		36.2	32	366.6	2.29
30	Gelbvieh	89.1	651.8	2.74	1165.3	2.95		36.6	14	513.5	3.21
31	Gelbvieh	88.2					1201.1	35.9	23		
32	Gelbvieh	84.5	697.8	2.99			1097.1	37.7	10		
33	Simmental	95.1					1338.7	38.5	21		
34	Simmental	95.2	716.7	3.03			1318.5	38.0	16		
35	Simmental	91.4	884.0	3.87			1400.8	37.1	20		
36	Simmental	98.4	782.6	3.34	1192.1	3.00		37.9	93	409.5	2.56
37	Simmental	95.0	838.5	3.63			1442.8	39.3	41		
38	Simmental	99.3	783.8	3.34	1328.2	3.37	1394.0	38.3	23	544.4	3.40
39	Simmental	98.8					1356.3	35.2	18		

Farm #	Breed	B.W.	Avg. Adj. 205	WGPD B.W.-Adj. 205	Avg. Adj. 365	WGPD B.W.-Adj. 365	Avg. Sale Date Weight	Scrotal Size	# of Bulls	Adj. 205 - 365 Wt. Gain	A.D.G.
40	Simmental	95.6	865.5	3.76	1389.7	3.55	1488.8	40.5	9	524.2	3.28
41	Simmental	93.1					1300.6	38.8	19		
42	Simmental	93.6					1416.6	38.0	15		
43	Simmental	92.9	796.1	3.43	1279.1	3.25	1363.5	38.9	58	483.0	3.02
44	Simmental	95.8	715.8	3.02	1312.6	3.33	1356.3	36.7	16	596.8	3.73
45	Simmental	89.9	818.5	3.55			1419.9	38.7	72		
46	Simmental	94.4	816.7	3.52	1423.6	3.64	1456.2	39.0	76	606.9	3.79
47	Simmental	91.7					1413.6	38.5	15		
48	Simmental	92.4					1425.4	38.1	15		
49	Simmental	93.6	713.0	3.02			1366.8	39.3	18		
50	Simmental	90.7	783.0	3.38	1324.1	3.38	1391.2	38.9	30	541.1	3.38
51	Simmental	93.5					1459.8	39.5	33		
52	Simmental	87.8					1348.2	40.0	14		
53	Simmental	97.9	775.7	3.31	1322.9	3.36	1514.2	38.9	7	547.2	3.42
54	Simmental	97.3					1462.1	38.6	19		
55	Simmental	96.7	753.4	3.20			1385.0	38.7	11		
56	Simmental	94.6	862.3	3.74	1419.1	3.63	1481.5	40.0	21	556.8	3.48
57	Simmental	93.1					1373.9	37.2	19		
58	Simmental	93.6						39.5	14		
59	Simmental	94.5	895.1	3.91	1504.6	3.86	1516.2	39.4	37	609.5	3.81
60	Simmental	99.6	860.1	3.71	1228.5	3.09	1426.7	40.3	6	368.4	2.30
61	Simmental	90.1					1464.4	39.5	36		
62	Simmental	93.7	741.7	3.16	1406.4	3.60	1465.0	39.5	18	664.7	4.15
63	Simmental	91.0	760.4	3.27	1231.3	3.12		37.2	37	470.9	2.94
64	Simmental	97.1	781.0	3.34	1454.1	3.72	1487.6	37.8	11	673.1	4.21
65	Simmental	89.8	716.9	3.06	1339.2	3.42	1309.3	36.9	17	622.3	3.89
66	Simmental	92.3	773.5	3.32	1223.9	3.10	1409.4	35.4	8	450.4	2.82
67	Simmental	90.2					1547.1	41.3	44		
68	Simmental	93.7	810.1	3.49			1451.7	40.0	84		
69	Simmental	96.7	852.1	3.68	1358.7	3.46	1370.0	40.1	6	506.6	3.17
70	Simmental	83.5					1485.2	40.0	11		
71	Simmental	88.4					1376.9	37.6	35		
72	Simmental	91.5	849.4	3.70	1294.6	3.30	1472.6	38.9	6	445.2	2.78
73	Simmental	90.8					1335.8	39.2	7		
74	Simmental	89.9					1295.7	37.1	7		
75	Simmental	100.1					1334.7	36.6	18		
76	Simmental	95.7					1379.0	37.0	7		
77	Simmental	96.1	811.5	3.49	1504.0	3.86	1541.3	39.3	9	692.5	4.33
78	Simmental	92.4			1354.3	3.46	1459.3	39.2	67		
79	Simmental	91.8			1253.3		1358.6	35.7	26		
80	Simmental	83.1	738.6	3.20	1310.6	3.36	1358.7	37.8	8	572.0	3.58
81	Simmental	91.2	721.4	3.07	1149.3	2.90	1383.3	39.3	16	427.9	2.67
82	Simmental	96.1	772.3	3.30			1380.0	41.0	10		
83	Simmental	94.7	747.6	3.18			1343.0	37.4	6		
84	Simmental	94.1					1413.4	36.8	37		

Right Way Rations

Gain without the Grain

The Right Way family of Beef feeds from Country Junction Feeds is specifically designed to provide the energy required for good growth but does not use high levels of starch in the ration.

Country Junction Feeds Right Way Beef Rations are designed for all genders and ages of cattle intended to have a long and productive reproductive life consuming and converting forages into usable energy.

Country Junction Feeds Right Way Beef Rations have been specifically named to draw attention to the fact that many animals, especially bulls, are grown on high energy, high non-structural carbohydrates (NSC) or “starch” or “grain” diets.

Bulls and replacement heifers intending to become the cornerstone of a cow/calf operation need to be treated as ruminants. The principle behind ruminant feeding is to provide optimum conditions in the rumen for fiber digestion. The high levels of grain being fed in many bull and heifer growing programs will lead to low rumen pH conditions, which can lead to acidosis and contribute to numerous herd health problems.

Wouldn't a forage-based feeding program make more sense? With straight forage diets, the growth rates are too low. That's why Country Junction Feeds family of Right Way Beef Rations are a high energy, highly digestible fiber-based feed that can provide as much energy as a barley grain-based feeding program without the high levels of starch.

In addition, Country Junction Feeds Right Way Beef Rations contain organic trace minerals and vegetable source Vitamin E. Organic trace minerals help by allowing the animal to absorb a higher rate of these specific trace minerals from the gut of the animal to the blood stream. Vegetable source Vitamin E also helps in the same manner by allowing a higher availability and absorption rate into the blood stream. These higher absorption rates result in better scrotal development and improved immune response in the animal.

These Country Junction Feeds Right Way Beef Rations can be fed to growing bulls, mature bulls, replacement heifers and mature cows. All animals up to 450 lbs. of body weight should be fed Country Junction Feeds 17% Right Way Calf Creep Ration. The mature bulls, heifers and cows should be fed one of the Country Junction Feeds Right Way Beef Rations at approximately 0.25 – 0.75% of body weight

Growing bull calves and yearling bulls should consume approximately 1.25 – 2% of body weight of the Country Junction Feeds Right Way Beef Rations. Some producers who have full-fed these rations have commented on the excellent, consistent growth of their bulls. There are very few off feed days and the bulls keep their legs under them.

The most common question we get asked is, “Can I feed this Right Way Beef Ration to my heifer calves?” to which we usually respond “Provided you don't whisper in your heifer's ear that she is eating a bull's ration...she will do fine with it.”

Country Junction Feeds Right Way Beef Fitting Rations work well in scenarios where a little more flesh is required. Often, a producer attending a show or multiple consignor sale, will use our Country Junction Feeds Right Way Beef Fitting Rations to add just a touch more flesh while still maintaining the gain without the grain. This ration is designed to be fed in a similar manner as our Country Junction Feeds Right Way Beef Rations.

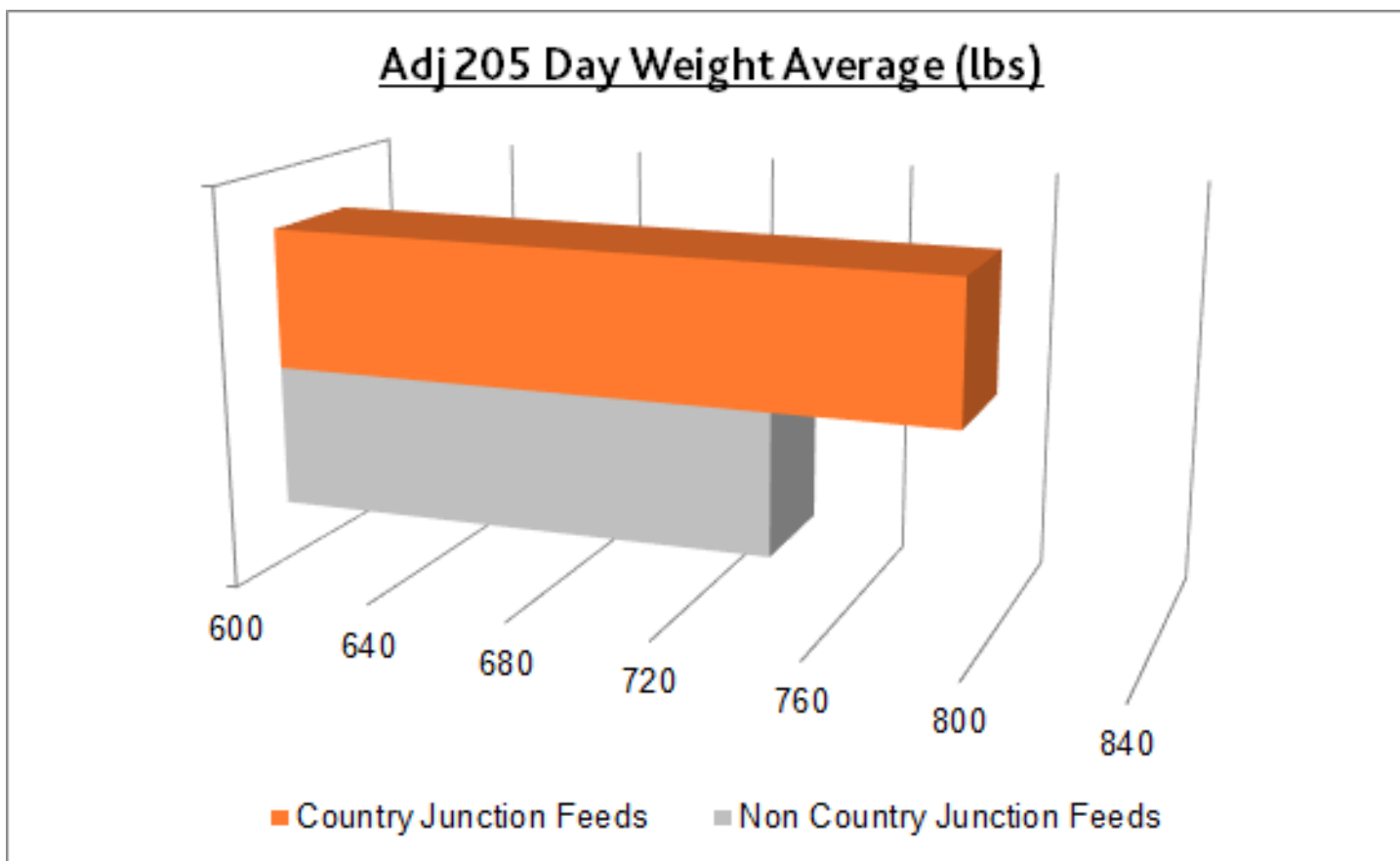
In previous years, those producers who were looking for a touch more flesh, would move on to our Country Junction Feeds Show Cattle Conditioner. As the popularity of the Country Junction Feeds Right Way Beef Fitting Rations continue, we see about 75% of the producers, who used the Show Cattle Conditioner in previous years, become immensely satisfied with the results of the Country Junction Feeds Right Way Beef Fitting Rations.

However, for the producers who are still looking for a more classic “Show Ration” available to their bulls for 6-8 weeks before a show, the Country Junction Feeds Show Cattle Conditioner is available.

A typical feeding regimen would be to start with our Country Junction Feeds Right Way Beef Ration. Then 6 – 8 weeks prior to their sale date the producer would chart their path using either our Country Junction Feeds Show Cattle Conditioner, Country Junction Feeds Right Way Beef Fitting Ration or continue using our Country Junction Feeds Right Way Beef Ration.

Adjusted 205 Day Weights

This section looks at the difference in weights at the adjusted 205 days of age. The data collected in this category comes from 53 producers which represents over 1520 bulls. Some things to keep in mind when analyzing this category is that at 205 days of age these calves have spent most of their lives getting their nutrition from their mother. A very strong correlation in this category can be placed on the mother's ability to raise a heavy calf. It should also be noted that when this report declares a calf as "Country Junction Feeds Fed", it is simply stating that the calf has been fed in a certain way and the nutritional program his mother was fed on is not included in this report. Although at 205 days, these bull calves have not seen a lot of feed yet, the report still shows almost 50 lbs. weight difference between the two feeding programs.



2020 Bull Sales:

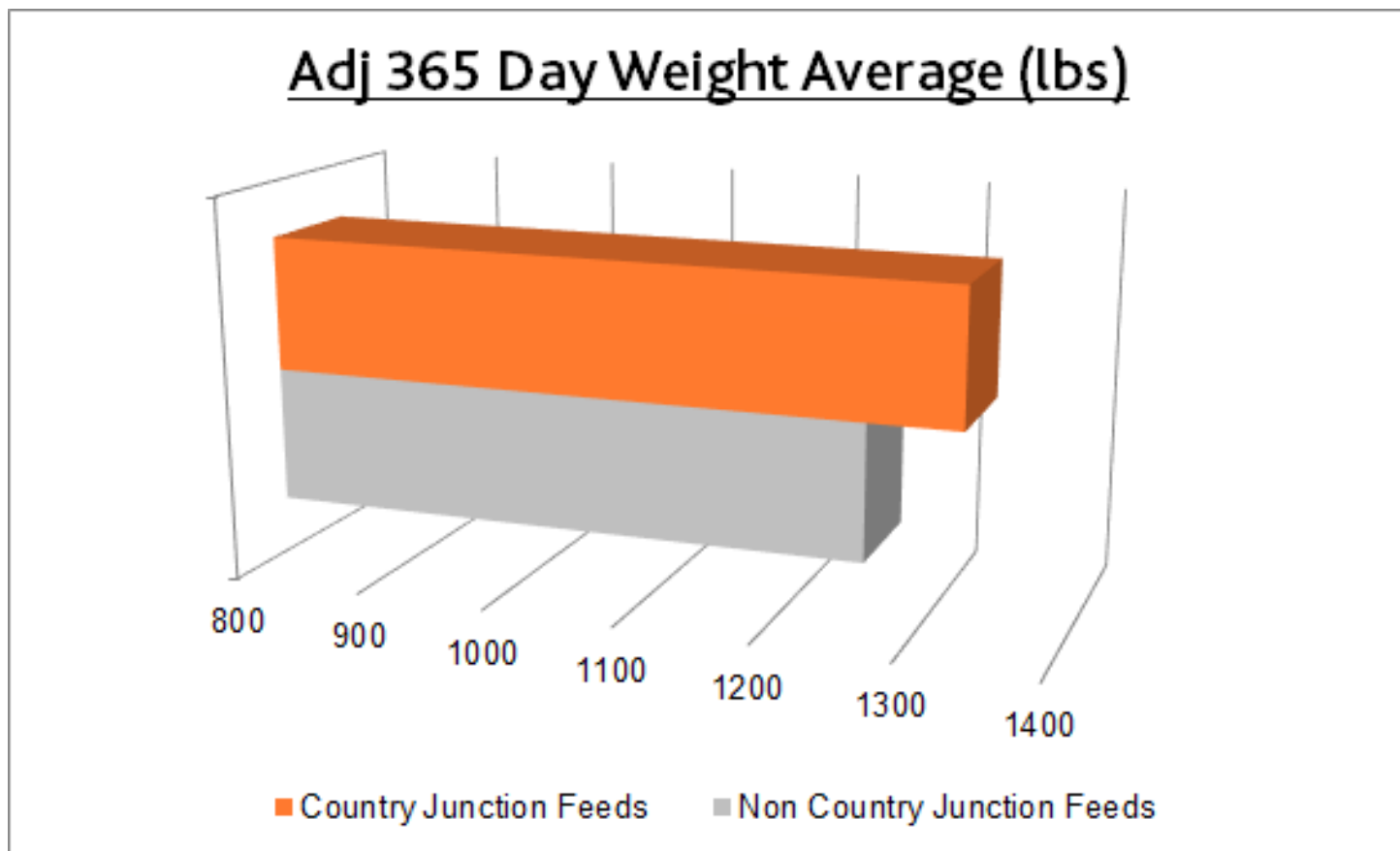
Adj 205 Day Weight Averages

Farm #	Breed	B.W.	Average Adj. 205	Avg. Sale Weight	Scrotal Size	# of Bulls	W.G.P.D. BW-Adj 205
3	Charolais	96.3	841.4	1383.3	37.2	43	3.63
2	Charolais	95.4	801.2	1451.1	40.8	61	3.44
1	Charolais	93.0	792.7	1432.1	40.5	50	3.41
8	Charolais	97.1	735.3		37.8	21	3.11
10	Hereford	87.6	851.9	1389.5	39.5	12	3.73
21	Angus	81.8	811.8	1419.1	36.7	6	3.56
14	Angus	78.8	769.5	1374.4	37.1	122	3.37
13	Angus	80.0	760.5	1243.7	36.0	33	3.32
20	Angus	85.1	765.0	1317.3	37.8	18	3.32
16	Angus	84.0	725.6	1389.4	38.4	42	3.13
26	Angus	80.1	717.1	1385.7	38.2	42	3.11
29	Angus	83.8	717.8		36.2	32	3.09
19	Angus	84.1	704.8	1197.5	36.2	12	3.03
12	Angus	83.3	702.4	1342.5	37.5	35	3.02
28	Angus	86.1	698.8	1325.5	39.6	31	2.99
23	Angus	84.7	683.4	1180.3	34.6	38	2.92
17	Angus	78.6	675.6	1254.0	37.2	28	2.91
11	Angus	85.6	668.4	1278.7	36.4	16	2.84
24	Angus	85.1	667.9	1126.9	34.4	11	2.84
22	Angus	80.9	646.7	1250.0	37.7	24	2.76
27	Angus	79.0	628.9		35.6	34	2.68
32	Gelbvieh	84.5	697.8	1097.1	37.7	10	2.99
30	Gelbvieh	89.1	651.8		36.6	14	2.74
59	Simmental	94.5	895.1	1516.2	39.4	37	3.91
35	Simmental	91.4	884.0	1400.8	37.1	20	3.87
40	Simmental	95.6	865.5	1488.8	40.5	9	3.76
56	Simmental	94.6	862.3	1481.5	40.0	21	3.74
60	Simmental	99.6	860.1	1426.7	40.3	6	3.71
72	Simmental	91.5	849.4	1472.6	38.9	6	3.70
69	Simmental	96.7	852.1	1370.0	40.1	6	3.68
37	Simmental	95.0	838.5	1442.8	39.3	41	3.63
45	Simmental	89.9	818.5	1419.9	38.7	72	3.55
46	Simmental	94.4	816.7	1456.2	39.0	76	3.52
68	Simmental	93.7	810.1	1451.7	40.0	84	3.49
77	Simmental	96.1	811.5	1541.3	39.3	9	3.49
43	Simmental	92.9	796.1	1363.5	38.9	58	3.43
50	Simmental	90.7	783.0	1391.2	38.9	30	3.38
36	Simmental	98.4	782.6		37.9	93	3.34
38	Simmental	99.3	783.8	1394.0	38.3	23	3.34
64	Simmental	97.1	781.0	1487.6	37.8	11	3.34
66	Simmental	92.3	773.5	1409.4	35.4	8	3.32
53	Simmental	97.9	775.7	1514.2	38.9	7	3.31
82	Simmental	96.1	772.3	1380.0	41.0	10	3.30
63	Simmental	91.0	760.4		37.2	37	3.27
55	Simmental	96.7	753.4	1385.0	38.7	11	3.20
80	Simmental	83.1	738.6	1358.7	37.8	8	3.20
83	Simmental	94.7	747.6	1343.0	37.4	6	3.18
62	Simmental	93.7	741.7	1465.0	39.5	18	3.16
81	Simmental	91.2	721.4	1383.3	39.3	16	3.07
65	Simmental	89.8	716.9	1309.3	36.9	17	3.06
34	Simmental	95.2	716.7	1318.5	38.0	16	3.03
49	Simmental	93.6	713.0	1366.8	39.3	18	3.02
44	Simmental	95.8	715.8	1356.3	36.7	16	3.02

Adjusted 365 Day Weights

In this section, you will find the data from 36 of the 84 farms listed in this report and represents over 1075 bulls. Some things to keep in mind when viewing these numbers is that it is necessary to make sure you are always comparing apples to apples. A medium framed Angus shouldn't be expected to weigh the same as a larger framed Simmental. There will also be some difference in genetic performance which is why on a farm by farm basis it is more difficult to evaluate the effectiveness of a feeding program. On-farm management factors also account for some of the differences in performance; be it forage quality, water quality, stocking density, and performance expectations.

Each of these conditions should be evaluated on a micro level, however, for the purpose of this report it is interesting to view things on the macro scale and notice the trends in these bulls listed in this section. One thing to consider is that when looking at the adjusted 205 day weights, we saw a considerable spread between Country Junction Feeds fed and non-Country Junction Feeds fed calves, which has a lot to do with the capacity of the cows raising those calves for the first 205 days. The adjusted 365-day weight gain is where we saw the Country Junction Feeds fed bulls continue to lead the pack, with over 68 lbs. more gain.



2020 Bull Sales:

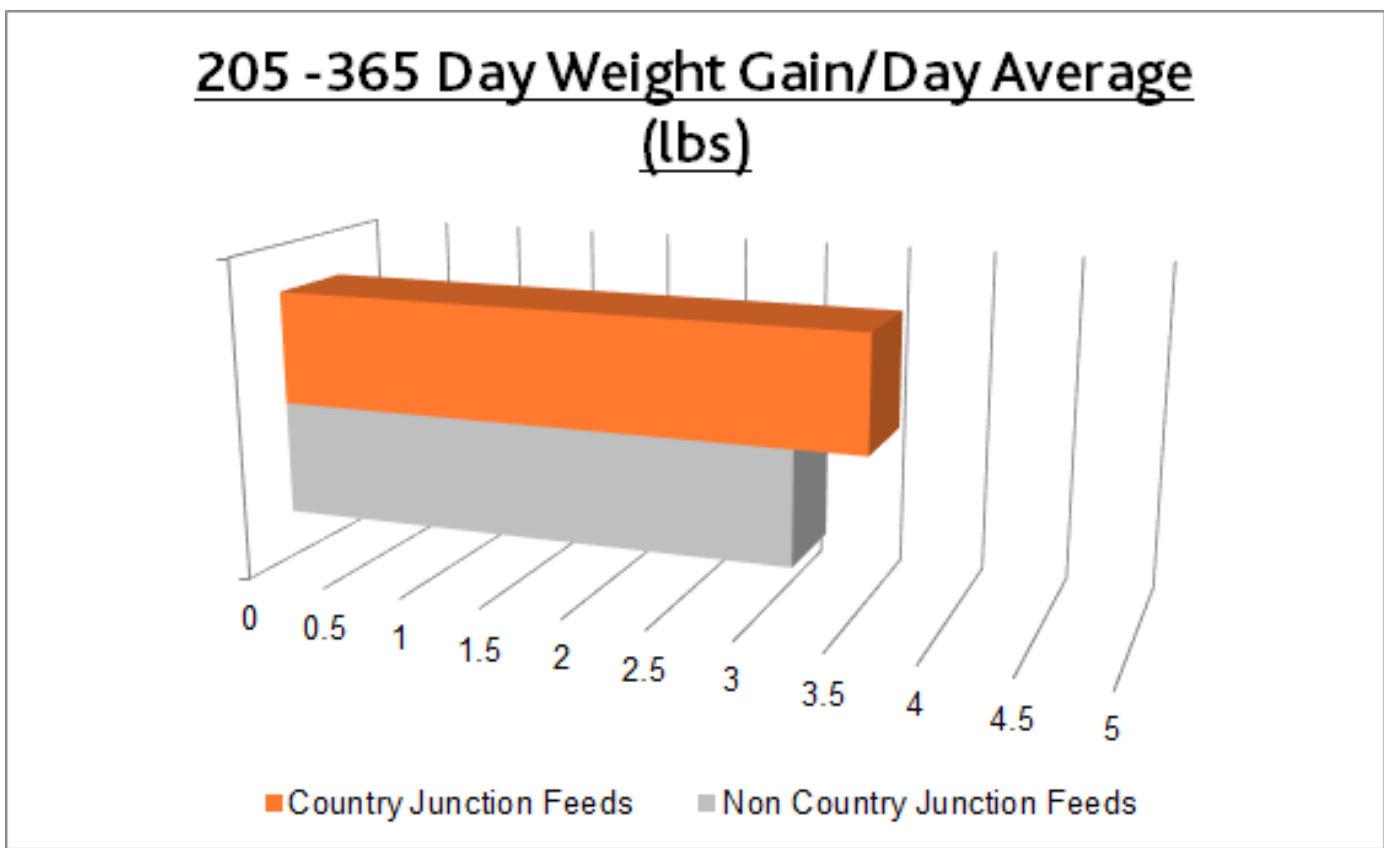
Adj 365 Day Weight Averages

Farm #	Breed	B.W.	Average Adj. 365	Avg. Sale Weight	Scrotal Size	# of Bulls	W.G.P.D. BW-Adj. 365
2	Charolais	95.4	1450.2	1451.1	40.8	61	3.71
8	Charolais	97.1	1203.7		37.8	21	3.03
10	Hereford	87.6	1341.0	1389.5	39.5	12	3.43
16	Angus	84.0	1313.6	1389.4	38.4	42	3.37
21	Angus	81.8	1310.0	1419.1	36.7	6	3.36
20	Angus	85.1	1255.9	1317.3	37.8	18	3.21
14	Angus	78.8	1248.2	1374.4	37.1	122	3.20
13	Angus	80.0	1236.2	1243.7	36.0	33	3.17
26	Angus	80.1	1224.5	1385.7	38.2	42	3.14
28	Angus	86.1	1184.5	1325.5	39.6	31	3.01
23	Angus	84.7	1086.0	1180.3	34.6	38	2.74
29	Angus	83.8	1084.4		36.2	32	2.74
17	Angus	78.6	1076.3	1254.0	37.2	28	2.73
30	Gelbvieh	89.1	1165.3		36.6	14	2.95
59	Simmental	94.5	1504.6	1516.2	39.4	37	3.86
77	Simmental	96.1	1504.0	1541.3	39.3	9	3.86
64	Simmental	97.1	1454.1	1487.6	37.8	11	3.72
46	Simmental	94.4	1423.6	1456.2	39.0	76	3.64
56	Simmental	94.6	1419.1	1481.5	40.0	21	3.63
62	Simmental	93.7	1406.4	1465.0	39.5	18	3.60
40	Simmental	95.6	1389.7	1488.8	40.5	9	3.55
78	Simmental	92.4	1354.3	1459.3	39.2	67	3.46
69	Simmental	96.7	1358.7	1370.0	40.1	6	3.46
65	Simmental	89.8	1339.2	1309.3	36.9	17	3.42
50	Simmental	90.7	1324.1	1391.2	38.9	30	3.38
38	Simmental	99.3	1328.2	1394.0	38.3	23	3.37
80	Simmental	83.1	1310.6	1358.7	37.8	8	3.36
53	Simmental	97.9	1322.9	1514.2	38.9	7	3.36
44	Simmental	95.8	1312.6	1356.3	36.7	16	3.33
72	Simmental	91.5	1294.6	1472.6	38.7	6	3.30
43	Simmental	92.9	1279.1	1363.5	38.9	58	3.25
63	Simmental	91.0	1231.3		37.2	37	3.12
66	Simmental	92.3	1223.9	1409.4	35.4	8	3.10
60	Simmental	99.6	1228.5	1426.7	40.3	6	3.09
36	Simmental	98.4	1192.1		37.9	93	3.00
81	Simmental	91.2	1149.3	1383.3	39.3	16	2.90

Weight Gain/Day from 205 Day Adjusted Weight to 365 Day Adjusted Weight

After weaning is probably the best place to evaluate a feeding program. This chart really shows the difference a feeding program can make on an operation. These 160 days, from adjusted 205 days to adjusted 365 days, show the amount of gain difference that can be attributed to the Country Junction Feeds fed bulls. The Non-Country Junction Feeds fed bulls are not an inferior group of bulls. They were just fed using various other feeding programs. The results from the Non-Country Junction Feeds fed bulls were attained from the exact same spring sale catalogues as the Country Junction Feeds fed bulls. Where is there a better place to compare apples to apples than in a sale barn! The Non-Country Junction Feeds fed bulls were displayed in the same sale barn as these top-gaining Country Junction Feeds fed bulls.

Producers have asked us to provide the weight gain per day through the fall and winter-feeding time. We thought that the best way to showcase this is to take the total gain from the 205-day adjusted weight to the 365-day adjusted weight and divide this total gain by 160 days. This would give us the weight gain per day for the 160 days on feed. Again, these weights are all based on the 205 and 365 day adjusted weights and are in no way scientifically based. We were able to interpret this weight gain per day from 34 of the 84 ranches, which represents 903 of the 2244 bulls. Based on this calculation, Country Junction Feeds fed bulls gained 67.2 lbs. more weight per bull, or 0.42 lbs. weight gain per day, over this 160-day feeding period.



2020 Bull Sales:

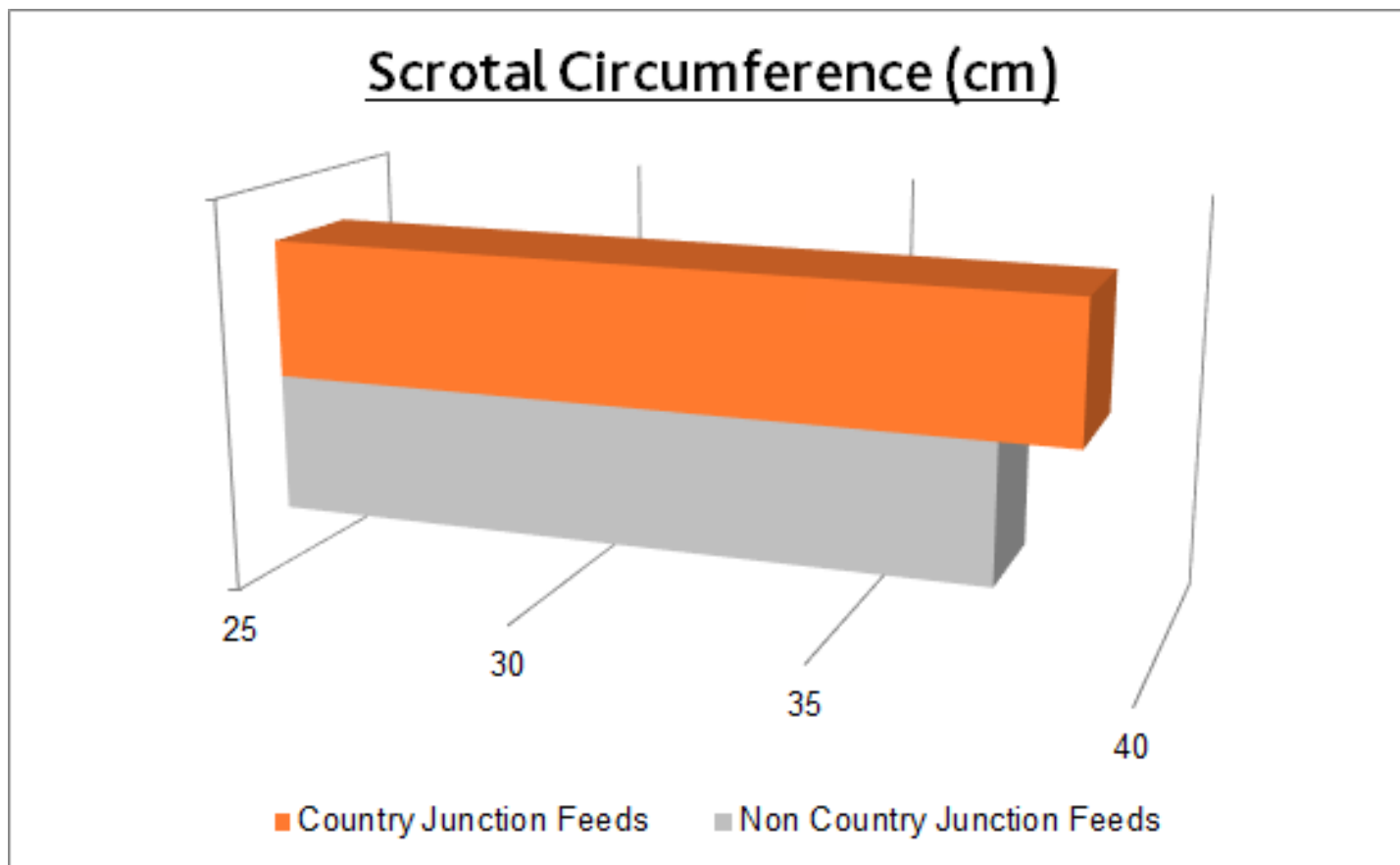
Daily Gain from 205 Adj to 365 Adj Weight

Farm #	Breed	B.W.	Average Adj. 205	Average Adj. 365	Avg. Sale Weight	# of Bulls	Adj 205 - 365 Weight Gain	A.D.G.
2	Charolais	95.4	801.2	1450.2	1451.1	61	649.0	4.06
8	Charolais	97.1	735.3	1203.7		21	468.4	2.93
10	Hereford	87.6	851.9	1341.0	1389.5	12	489.1	3.06
16	Angus	84.0	725.6	1313.6	1389.4	42	588.0	3.68
26	Angus	80.1	717.1	1224.5	1385.7	42	507.4	3.17
21	Angus	81.8	811.8	1310.0	1419.1	6	498.2	3.11
20	Angus	85.1	765.0	1255.9	1317.3	18	490.9	3.07
28	Angus	86.1	698.8	1184.5	1325.5	31	485.7	3.04
14	Angus	78.8	769.5	1248.2	1374.4	122	478.7	2.99
13	Angus	80.0	760.5	1236.2	1243.7	33	475.7	2.97
23	Angus	84.7	683.4	1086.0	1180.3	38	402.6	2.52
17	Angus	78.6	675.6	1076.3	1254.0	28	400.7	2.50
29	Angus	83.8	717.8	1084.4		32	366.6	2.29
30	Gelbvieh	89.1	651.8	1165.3		14	513.5	3.21
77	Simmental	96.1	811.5	1504.0	1541.3	9	692.5	4.33
64	Simmental	97.1	781.0	1454.1	1487.6	11	673.1	4.21
62	Simmental	93.7	741.7	1406.4	1465.0	18	664.7	4.15
65	Simmental	89.8	716.9	1339.2	1309.3	17	622.3	3.89
59	Simmental	94.5	895.1	1504.6	1516.2	37	609.5	3.81
46	Simmental	94.4	816.7	1423.6	1456.2	76	606.9	3.79
44	Simmental	95.8	715.8	1312.6	1356.3	16	596.8	3.73
80	Simmental	83.1	738.6	1310.6	1358.7	8	572.0	3.58
56	Simmental	94.6	862.3	1419.1	1481.5	21	556.8	3.48
53	Simmental	97.9	775.7	1322.9	1514.2	7	547.2	3.42
38	Simmental	99.3	783.8	1328.2	1394.0	23	544.4	3.40
50	Simmental	90.7	783.0	1324.1	1391.2	30	541.1	3.38
40	Simmental	95.6	865.5	1389.7	1488.8	9	524.2	3.28
69	Simmental	96.7	852.1	1358.7	1370.0	6	506.6	3.17
43	Simmental	92.9	796.1	1279.1	1363.5	58	483.0	3.02
63	Simmental	91.0	760.4	1231.3		37	470.9	2.94
66	Simmental	92.3	773.5	1223.9	1409.4	8	450.4	2.82
72	Simmental	91.5	849.4	1294.6	1472.6	6	445.2	2.78
81	Simmental	91.2	721.4	1149.3	1383.3	16	427.9	2.67
60	Simmental	99.6	860.1	1228.5	1426.7	6	368.4	2.30

Scrotal Circumference

2020 is the fifteenth year that we have been able to demonstrate scrotal circumference advantage when feeding Country Junction Feeds Right Way Beef rations. As producers have become more familiar with Country Junction Feeds, some have claimed to have seen greater sexual maturity in their bulls at a younger age. Scrotal circumference perhaps is just as essential as growth when marketing bulls for seed stock. We were able to obtain scrotal circumference from all 84 ranches, and have it displayed on the following pages. This section is based on all 2244 bulls and shows a larger scrotal circumference on average for bulls on a Country Junction Feeds feeding program.

With so much of scrotal circumference based on breed and genetic potential, the numbers seen in this report show a wide variety of results. Feed can play a role in the development of breeding soundness. Feed ingredients such as organic trace minerals have been known to impact the sexual maturity of breeding stock. Selenium yeast is another ingredient which can enhance sexual maturity in young bulls. With the availability of new ingredients for our rations, we have proven an increase in scrotal circumference by feeding Country Junction Feeds Right Way Beef Rations. The overall average for Country Junction Feeds fed bulls is 38.8 cm and the non-Country Junction Feeds fed bulls is 37.5 cm. A Difference of 1.3 cm.



2020 Bull Sales: Scrotal Circumference

Farm #	Breed	B.W.	Adj. 205 Average	Adj. 365 Average	Avg. Sale Weight	# of Bulls	Scrotal Size
2	Charolais	95.4	801.2	1450.2	1451.1	61	40.8
1	Charolais	93.0	792.7		1432.1	50	40.5
5	Charolais	93.3			1385.2	26	40.4
4	Charolais	90.2			1426.0	32	39.9
6	Charolais	94.8			1445.3	16	38.2
8	Charolais	97.1	735.3	1203.7		21	37.8
7	Charolais	95.5			1463.2	30	37.3
3	Charolais	96.3	841.4		1383.3	43	37.2
9	Charolais	96.6			1361.9	15	35.7
10	Hereford	87.6	851.9	1341.0	1389.5	12	39.5
28	Angus	86.1	698.8	1184.5	1325.5	31	39.6
16	Angus	84.0	725.6	1313.6	1389.4	42	38.4
26	Angus	80.1	717.1	1224.5	1385.7	42	38.2
25	Angus	80.0			1316.0	37	38.0
15	Angus	83.5				30	38.0
20	Angus	85.1	765.0	1255.9	1317.3	18	37.8
22	Angus	80.9	646.7		1250.0	24	37.7
12	Angus	83.3	702.4		1342.5	35	37.5
17	Angus	78.6	675.6	1076.3	1254.0	28	37.2
14	Angus	78.8	769.5	1248.2	1374.4	122	37.1
18	Angus	79.1			1327.1	10	36.7
21	Angus	81.8	811.8	1310.0	1419.1	6	36.7
11	Angus	85.6	668.4		1278.7	16	36.4
29	Angus	83.8	717.8	1084.4		32	36.2
19	Angus	84.1	704.8		1197.5	12	36.2
13	Angus	80.0	760.5	1236.2	1243.7	33	36.0
27	Angus	79.0	628.9		1256.8	34	35.6
23	Angus	84.7	683.4	1086.0	1180.3	38	34.6
24	Angus	85.1	667.9		1126.9	11	34.4
23	Angus	84.7	683.4	1086.0		38	33.7
32	Gelbvieh	84.5	697.8		1097.1	10	37.7
30	Gelbvieh	89.1	651.8	1165.3		14	36.6
31	Gelbvieh	88.2			1201.1	23	35.9
67	Simmental	90.2			1547.1	44	41.3
82	Simmental	96.1	772.3		1380.0	10	41.0
40	Simmental	95.6	865.5	1389.7	1488.8	9	40.5
60	Simmental	99.6	860.1	1228.5	1426.7	6	40.3
69	Simmental	96.7	852.1	1358.7	1370.0	6	40.1
68	Simmental	93.7	810.1		1451.7	84	40.0
56	Simmental	94.6	862.3	1419.1	1481.5	21	40.0
52	Simmental	87.8			1348.2	14	40.0
70	Simmental	83.5			1485.2	11	40.0
61	Simmental	90.1			1464.4	36	39.5
51	Simmental	93.5			1459.8	33	39.5
62	Simmental	93.7	741.7	1406.4	1465.0	18	39.5
58	Simmental	93.6				14	39.5
59	Simmental	94.5	895.1	1504.6	1516.2	37	39.4
37	Simmental	95.0	838.5		1442.8	41	39.3
49	Simmental	93.6	713.0		1366.8	18	39.3
81	Simmental	91.2	721.4	1149.3	1383.3	16	39.3
77	Simmental	96.1	811.5	1504.0	1541.3	9	39.3
78	Simmental	92.4		1354.3	1459.3	67	39.2
73	Simmental	90.8			1335.8	7	39.2
46	Simmental	94.4	816.7	1423.6	1456.2	76	39.0
43	Simmental	92.9	796.1	1279.1	1363.5	58	38.9
50	Simmental	90.7	783.0	1324.1	1391.2	30	38.9
53	Simmental	97.9	775.7	1322.9	1514.2	7	38.9
72	Simmental	91.5	849.4	1294.6	1472.6	6	38.9



2019-2020 COUNTRY JUNCTION FED BULLS : FEEDING PROGRAM

Farm #	Breed	B.W.	Adj. 205 Average	Adj. 365 Average	Avg. Sale Weight	# of Bulls	Scrotal Size
41	Simmental	93.1			1300.6	19	38.8
45	Simmental	89.9	818.5		1419.9	72	38.7
55	Simmental	96.7	753.4		1385.0	11	38.7
54	Simmental	97.3			1462.1	19	38.6
33	Simmental	95.1			1338.7	21	38.5
47	Simmental	91.7			1413.6	15	38.5
38	Simmental	99.3	783.8	1328.2	1394.0	23	38.3
48	Simmental	92.4			1425.4	15	38.1
34	Simmental	95.2	716.7		1318.5	16	38.0
42	Simmental	93.6			1416.6	15	38.0
36	Simmental	98.4	782.6	1192.1		93	37.9
64	Simmental	97.1	781.0	1454.1	1487.6	11	37.8
80	Simmental	83.1	738.6	1310.6	1358.7	8	37.8
71	Simmental	88.4			1376.9	35	37.6
83	Simmental	94.7	747.6		1343.0	6	37.4
63	Simmental	91.0	760.4	1231.3		37	37.2
57	Simmental	93.1			1373.9	19	37.2
35	Simmental	91.4	884.0		1400.8	20	37.1
74	Simmental	89.9			1295.7	7	37.1
76	Simmental	95.7			1379.0	7	37.0
65	Simmental	89.8	716.9	1339.2	1309.3	17	36.9
84	Simmental	94.1			1413.4	37	36.8
44	Simmental	95.8	715.8	1312.6	1356.3	16	36.7
75	Simmental	100.1			1334.7	18	36.6
79	Simmental	91.8		1253.3	1358.6	26	35.7
66	Simmental	92.3	773.5	1223.9	1409.4	8	35.4
39	Simmental	98.8			1356.3	18	35.2

2019-2020 COUNTRY JUNCTION FEEDS FED BULLS

The farms listed below were purchasing Country Junction Feeds "Right Way" Beef Rations this past year

Farm #1	Farm #2	Farm #3	Farm #4	Farm #5	Farm #11	Farm #12	Farm #15	Farm #24
Farm #30	Farm #31	Farm #33	Farm #34	Farm #35	Farm #36	Farm #37	Farm #38	Farm #39
Farm #40	Farm #42	Farm #43	Farm #45	Farm #46	Farm #47	Farm #48	Farm #49	Farm #50
Farm #52	Farm #53	Farm #54	Farm #57	Farm #58	Farm #60	Farm #62	Farm #67	Farm #68
Farm #69	Farm #70	Farm #71	Farm #73	Farm #76	Farm #77	Farm #79	Farm #82	



DeStress raises the bar on beef cattle performance

Reduce shrink and increase carcass weight

A nutritional therapy manufactured in Alberta which is designed to address the issue of reducing dark cutters in beef arriving at slaughter plants.

The product, called *DeStress*, is manufactured by Country Junction Feeds, a division of Wetaskiwin Co-operative Association Limited.

Al Schaefer of Lacombe, Alta., and colleagues worked on the formulation for more than 20 years.

In addition to use in cattle bound for slaughter, there are other areas, such as weaned calves, swine and equine production and performance, where feeding of this product provides significant benefits.

When cattle are shipped, stress in the form of low blood and muscle sugar, dehydration and the loss of electrolytes and amino acids occurs regardless of the distance. This is seen overall as shrinkage.

Animals experience it in various degrees, depending on genetics, weather, excitability or docility of the cattle, as well as the method of handling.

Cattle owners may be able to offset potential shipping losses by feeding *DeStress Nutritional Therapy* product before transport to replace the expected nutrient depletion that occurs during shipping.

Shrink generally occurs when transporting cattle to a slaughter plant, auction market or home from pasture. Some is caused by fecal loss, urine loss and sweat, but muscle loss is also to blame.

Muscle loss becomes excessive when it climbs above two to four percent, at which point treating stress can result in significant benefits.

Sometimes, freshly weaned cattle that have been transported and held overnight at auction markets can have weight shrinkage of more than 10 percent. If the weight loss is not replenished quickly, cattle are

more prone to get sick from other causes, or in the case of slaughter animals, dark cutters will increase.

DeStress is a registered nutritive supplement so has no slaughter withdrawal time and is not considered a pharmaceutical. It contains a combination of electrolytes, amino acids and certain blood sugars.

It is designed to serve a similar role as does administering electrolytes to a scouring calf or a stressed diarrheic show bull to counteract dehydration.

It is easy to administer as a feed supplement, mixed into feed 24 hours before transportation. Schaefer and his colleagues found about one to two percent less shrinkage compared to controls, which is deemed statistically significant.

The improved shrinkage rates represent about 15 to 30 pounds on a 1,500 lb. market weight animal.

As well, improvements in carcass yield and grade were noticed.

In addition to the benefits it provides for cattle finishers, the cattle industry overall benefits through lower cattle illnesses and death rates provided by a non-prescription product.

In the future, there may be more specific guidelines on when a nutritive supplement may become mandatory, such as type of cattle, temperament, shipping distance and ambient temperature.

The research from Schaefer's group also determined that the top and front of cattle liners cause more shrink on average than cattle in the main lower compartment of transports. In upper compartments, there was an average of more than eight percent shrink on 900 lb. feeders, which converts to more than 70 lb. The nutritive supplement will significantly reduce some of these losses.

Thank You

Country Junction Feeds would like to acknowledge the co-operative effort of all the producers who participated in this report. We thank you for your patronage and look forward to many more years of continued support.

Sincerely,

Country Junction Feeds Nutrition and Sales Team

Darrell Kimmel

Bernie Grumpelt

Nancy Fischer

Brian Malmas

Kevin Cummings

David Gibson

Jamie McAllister

Caitlyn Lind

Kirsten Smith

Cassie Hausauer

www.CountryJunctionFeeds.com



**COUNTRY
JUNCTION**
FEEDS

P: 1.780.352.9155

TF: 1.800.729.9155

F: 1.780.352.9114

E: info@countryjunctionfeeds.com

4707 40 Ave
Wetaskiwin AB
T9A 2B8